



*More than what you think.*

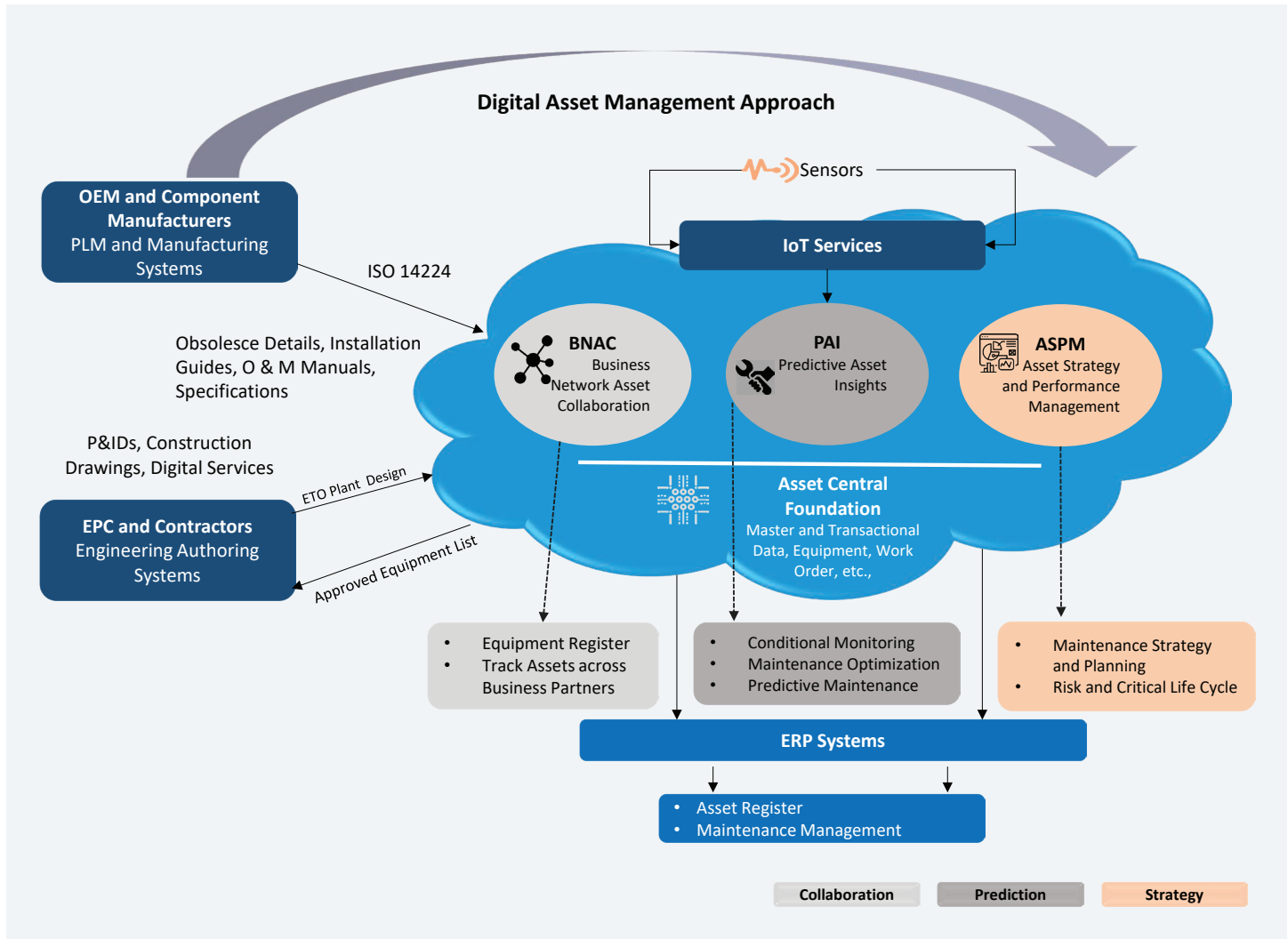
# DIGITAL ASSET MANAGEMENT (DAM)

Harnessing the potential of digital transformation in asset management achieves greater Asset operational efficiency, reduces maintenance costs, improves asset availability, and drives overall equipment efficiency.

# SAP Intelligent Asset Management (IAM)

SAP Intelligent Asset Management is a comprehensive solution that leverages advanced technologies such as artificial intelligence, machine learning, and the Internet of Things (IoT) to optimize the maintenance of assets. It enables organizations to monitor, maintain, and optimize their assets throughout their lifecycle, resulting in improved operational efficiency, reduced downtime, and enhanced asset performance. The solution offers real-time insights, predictive analytics, and proactive maintenance capabilities to help businesses make data-driven decisions and ensure the reliability and availability of their assets.

## Solution Architecture



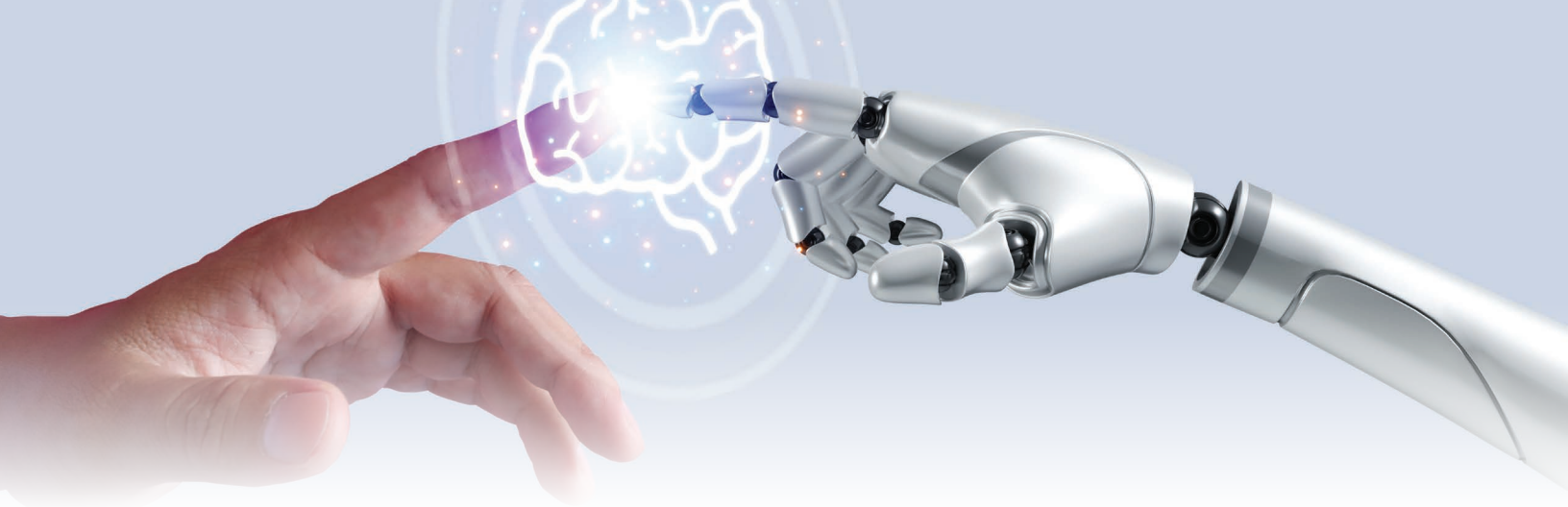
## Business Challenges

- Unplanned Downtime
- Reactive Maintenance
- Low Yield and Throughput
- Disparate Asset Information
- Escalating Maintenance Costs



## Organizations Benefits

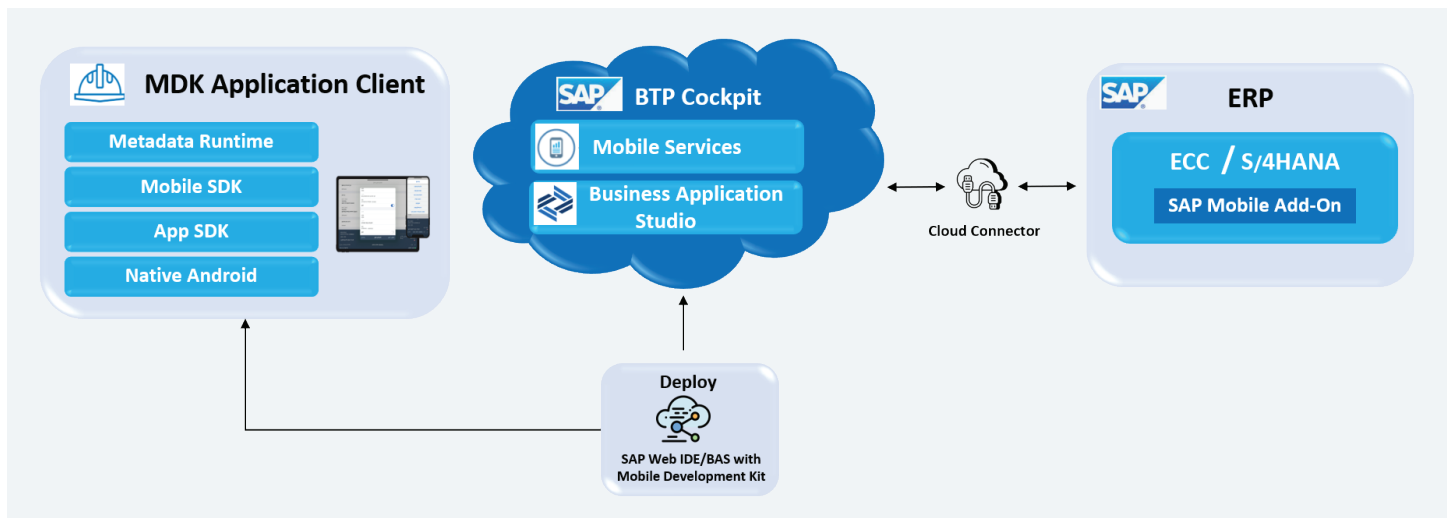
- Improves Asset Uptime and OEE
- Provides Real-Time Asset Analytics
- Improves Yield and Throughput
- Drives from Reactive to Predictive Maintenance
- Optimizes Maintenance Costs



## SAP Service and Asset Manager (SSAM)

SAP Service and Asset Manager is a mobile SAP Intelligent Asset Management solution application. It aims to simplify and optimize the maintenance of assets in various industries like manufacturing, utilities, and oil and gas. With SAP Service and Asset Manager, field technicians and maintenance workers can access real-time asset information, perform inspections, create work orders, and execute maintenance tasks online/offline directly from their mobile devices. The App integrates with backend systems, enabling seamless data synchronization & offering a holistic view of maintenance activities. By digitizing asset management processes that support iOS/Android devices, SAP Service and Asset Manager help organizations improve productivity.

## Solution Architecture



## Business Challenges

- No Visibility on the Technician's Availability
- Lack of Visibility on Spare Parts Inventory
- Spiraling Maintenance Costs
- Paper-Based Work Instructions
- Lack of Real-Time Insights



## Organizations Benefits

- Seamless Integration with ECC/S4HANA System
- Optimize Maintenance Execution and Resource Utilization
- Improves Asset Performance
- Maintenance Tasks Execution in Online / Offline Mode
- 'On-Go' Asset Maintenance

# Digital Asset Management Capabilities

## 1. SAP Intelligent Asset Management Capabilities

- Business Stakeholders Collaboration
- Risk and Criticality Assessment
- Failure Mode Effects and Analysis
- Asset Performance Management
- Condition Based Monitoring
- Predictive Modelling Analysis

## 2. SAP Service and Asset Manager Capabilities

- Seamless Integration with Backend ECC/S4HANA System
- Work Order Execution and Approval Process
- Integration with IoT Platform
- Operate in Online/Offline Modes
- Supports iOS/Android Devices
- Crew, Quality, and CATS Management

## 3. SAP Data Intelligence Capabilities

- Data Modelling Services
- Data Orchestration Services
- Data Governance
- AI / ML / DL Services
- Other Functional Capabilities like Data Lake, Pipeline and Workflows, Metadata applications, etc

## 4. SAP Business Rules Services Capabilities

- Enable Centralized Decision Management
- Reusability of Rule Logic
- Capability to Build APIs
- Automate Rule Logic
- Minimize the Code Changes
- No 'IT' Dependency



# Project Summary

## Discrete Manufacturing

A global leader in agri-business, construction, forestry machinery, diesel engines, drivetrains, etc.



## SAP IAM Implementation - Asset Common Operational Picture

### Technology Stack:

SAP Enterprise Asset Management (EAM), SAP Intelligent Asset Management (IAM) with SAP Asset Intelligent Network (AIN), SAP Asset Strategy and Performance Management (ASPM), SAP Predictive Maintenance (PdMS) components and SAP Plant Connectivity (PCo)

### Project Summary:

The SAP IAM solution was implemented to drive condition-based monitoring for critical assets. Leveraging Risk and Criticality (R & C) and Failure Mode Effects and Analysis (FMEA) of the SAP Asset Strategy and Performance Management (ASPM) module of IAM, an Optimal/Lean Maintenance strategy was put in place. Additionally, establish a comprehensive Asset Common Operational Picture by bringing OEMs, Service Providers, etc., to a common platform, i.e., SAP Asset Intelligent Network (AIN).

### Business Outcomes:

- Improved Asset Reliability
- Condition-based monitoring
- Single Version of Truth to All Stake Holders
- Reduced Unplanned Downtime
- Optimized Maintenance Plans
- Asset Lean Maintenance

## Composite Manufacturing Materials

A global Fortune 500 company that develops and produces insulation, roofing, and fiberglass.



## SAP IAM Implementation - Asset Lean Maintenance Model

### Technology Stack:

SAP Enterprise Asset Management (EAM), SAP Intelligent Asset Management (IAM) with SAP Asset Strategy and Performance Management (ASPM), SAP Predictive Maintenance (PdMS) components, SAP Manufacturing Integration and Intelligence (MII) and SAP Fiori UI5.

### Project Summary:

SAP IAM solution implemented to establish a comprehensive Asset Common Operational Picture, Condition-Based Monitoring that automates Alerts and PM notifications, and Optimal/Lean Maintenance model for 1600 equipment on the shop floor.

### Business Outcomes:

- Improved Asset Performance
- Improved Asset Reliability
- Reduced Unplanned Downtime
- Optimized Maintenance Costs
- Condition Based Monitoring
- Automated Meter Readings

# Project Summary

## Mining Industry

A global leader in multi-disciplinary contract mining, engineering, procurement & construction, and oil & gas services



## SAP IAM Implementation – Real-time Asset Health Performance Monitor

### Technology Stack:

SAP Enterprise Asset Management (EAM), SAP Intelligent Asset Management (IAM), SAP Business Rules Service (BRS), SAP Data Intelligence (DI), SAP Analytics Cloud (SAC), SAP Landscape Transformation Replication Server (SLT) and HANA Cloud DB.

### Project Summary:

The integrated SAP IAM solution has been implemented for 500+ fleet heavy equipment to provide a single version of the asset health data, automate the alerts and PM notifications by leveraging condition-based monitoring, and enable monitoring the health of the fleet equipment in real-time asset KPI dashboards. The solution is scalable for new data sources and fleet equipment.

### Business Outcomes:

- Enabled Real-Time Data Capture
- Automated PM Alerts, Notifications, and E-Mails By CBM
- Improved Machine Health
- Facilitated Automated Real-Time Information for Decision Making
- Condition Based Monitoring
- Solution can be quickly extended to include Predictive Maintenance

## SAP AM Implementation – Asset Maintenance using Handheld Devices

### Technology Stack:

SAP Enterprise Asset Management (EAM), SAP Asset Manager (SAM) and SAP Mobile Development Kit (MDK).

### Project Summary:

SAM solution implementation has minimized downtime by optimizing resource utilization, reducing service backlog, enabling paperless work order operations execution in online/offline mode, optimizing asset performance, and improving the asset's reliability considerably.

### Business Outcomes:

- Improved the Plant's Operational Excellence
- 'On-Go' Asset Maintenance
- Reduced the Service Backlogs
- Complete Visibility of the Maintenance Services
- Increased Asset Reliability and Reduces Asset Downtime
- Paperless Execution of Work Order Operations

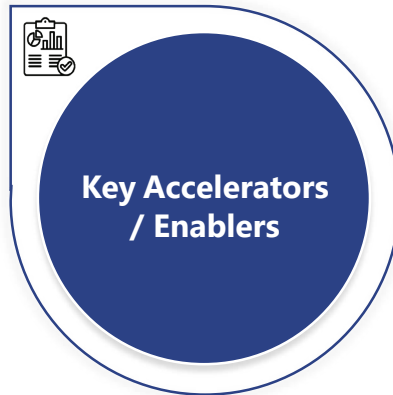
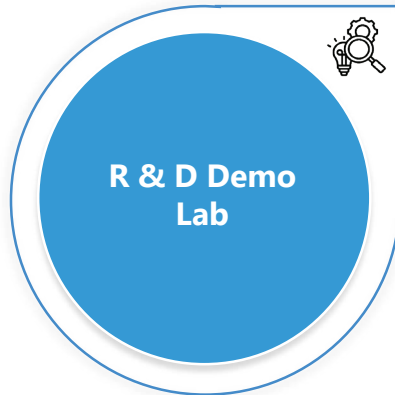
# YASH Key Differentiators in DAM Systems

Strong techno-functional team with **1000+** person months of experience implementing Digital Manufacturing and Digital Asset Management programs for global clients



**MoSCoW** model of project implementation and the **Lean Six Sigma** approach are critical in ensuring program success and realizing business outcomes.

YASH's state-of-the-art **R&D Demo Lab** for developing industry-specific accelerators and PoCs and partnering with customers in their manufacturing transformation and Industry 4.0 initiatives.



**10+** proven accelerators/enablers related to Digital Manufacturing and Digital asset management programs (standard questionnaires, RTM models, several APIs/tools that automate manual work) that help compress the project implementation timelines by **~20%**.

For more information contact YASH today at [info@yash.com](mailto:info@yash.com) or visit [www.yash.com](http://www.yash.com)

## About YASH Technologies

YASH Technologies focuses on customer success. As a leading technology services and outsourcing partner for large and fast growing global customers, the company leverages technology and flexible business models to drive innovation and value throughout its customer's enterprise. YASH customer centric engagement and delivery framework integrates specialized domain and consulting capabilities with proprietary methodologies and solution offerings to provision application, infrastructure and end user focused Right-Sourcing services. YASH is a SEI CMMI (Level 5) and an ISO 9001:2015 certified company with U.S. and India headquarters and regional sales and development offices globally with customers spread across 6 continents.



**Global Presence: AMERICAS | EUROPE | APAC | MEA**

World HQ: 841 Avenue of the Cities East Moline IL-61244 USA

Tel: 309-755-0433 | Fax: 309-796-1242 | [www.yash.com](http://www.yash.com)

